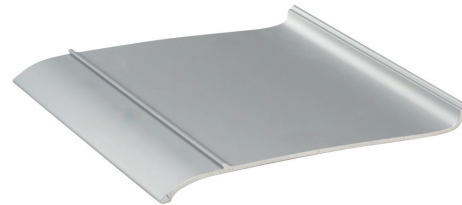


Wine Rack Assembly

The wine racks are assembled from these primary components:



Bottle Module AS200



Base Module AB200

Assembly Method:

1

Slide Bottle Modules together whilst keeping locking lugs separated.

2

Snap locking lugs together by applying pressure with hands as shown.

3

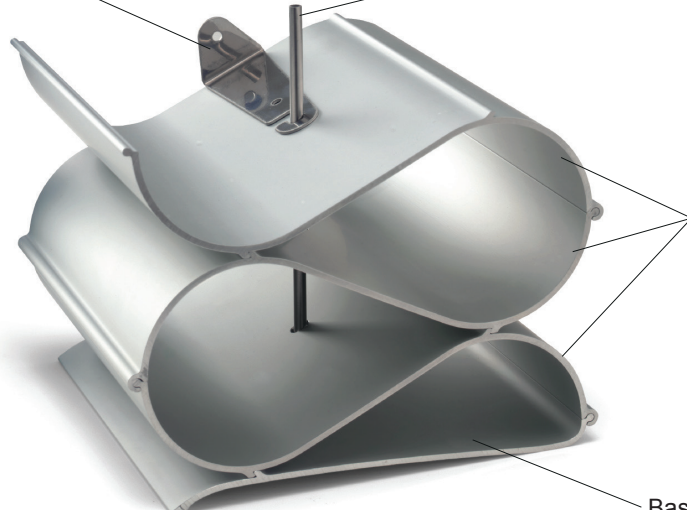
When all modules are connected, place retaining tube into centre hole of stack.

Wall Bracket WBA1
Recommended spacing: use one at top and bottom of stack; or every 800mm (approx. 15-16 Bottle Modules)

6mm Tube SST6
(cut to length as required)

Each module has a centre hole through which a tube (SST6) is inserted once the stack is assembled. Wall brackets (WBA1) are hooked around this tube and then screwed to the back wall of the cabinet to secure.

Stacks must be positioned on a horizontal surface with adequate strength to support the combined weight of the rack and bottles.



Bottle Modules AS200

Base Module AB200